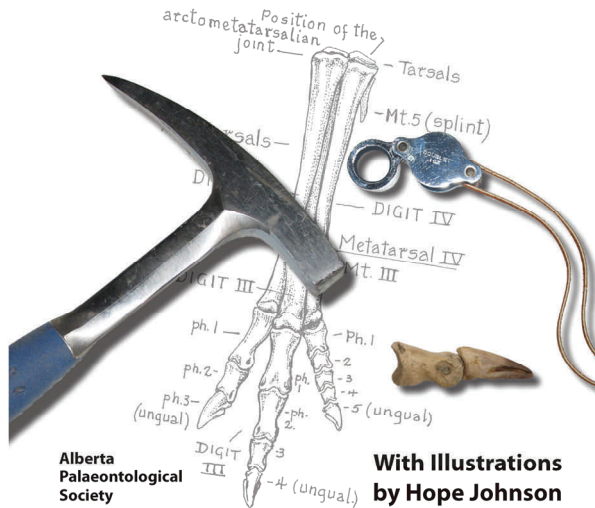


The Alberta Palaeontological Society Proudly Presents

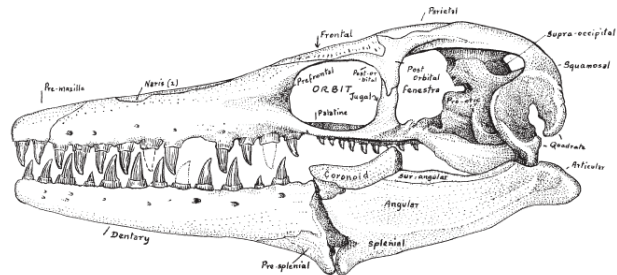
A Guide to Common Vertebrate Fossils from the Cretaceous of Alberta. Assembled by the Alberta Palaeontological Society (APS) with illustrations by naturalist Hope Johnson; Foreword by Dr. Donald Brinkman, Director of Preservation and Research, Royal Tyrrell Museum of Palaeontology.

Contents include: Geology of the Vertebrate Fossil Bearing Formations in Alberta; Collecting Regulations; Curation; Skeleton Terminology; Fishes; Amphibians; Turtles; Champsosaurs; Crocodiles; Lizards; Mosasaurs; Plesiosaurs; Tyrannosaurids; Ornithomimids; Hadrosaurs; Ceratopsians; Ankylosaurs; Pachycephalosaurs; Mammals; Index; and much more.

Guide to Common Vertebrate Fossils from the Cretaceous of Alberta



Hope Johnson's illustrations are the inspiration for this publication. Her passion for nature and contributions to the science of palaeontology have brought Alberta's natural history to life.



Spiral bound with 234 pages; 144 illustrations, Photographs, and tables. This guide is a must for any amateur and professional palaeontologist.

APS Members: \$25.00 Non-Members: \$30.00
Shipping and Handling \$15.00 Canada
For orders outside Canada or quantity rates,
please inquire - www.albertapaleo.org

ISBN 978-0-9811101-0-3

Order Form

Guide to Common Vertebrate Fossils from the Cretaceous of Alberta

Send your prepaid order to:

Alberta Palaeontological Society
PO Box 35111 Sarcee Postal Outlet
Calgary, Alberta, Canada T3E 7C7

Please allow 4-6 weeks for delivery.

Name _____

Address _____

Province / State _____

Postal / Zip Code _____

E-mail _____

- I would like to inquire about an order outside Canada or quantity purchase.
- (Canada) I am an APS Member, please send me one copy @ \$25.00 _____
- (Canada) I am **NOT** an APS Member, please send me one copy @ \$30.00 _____
- (Canada) Shipping and Handling for one copy (add \$15.00) _____

Total Enclosed \$ _____

Please make Cheque or Money Order payable in Canadian Funds to the Alberta Palaeontological Society